

Software

Sim-On Water



hrwallingford

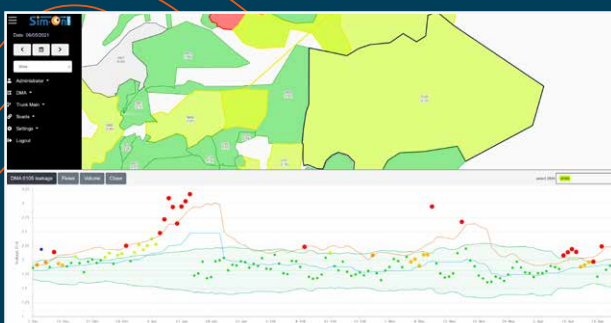
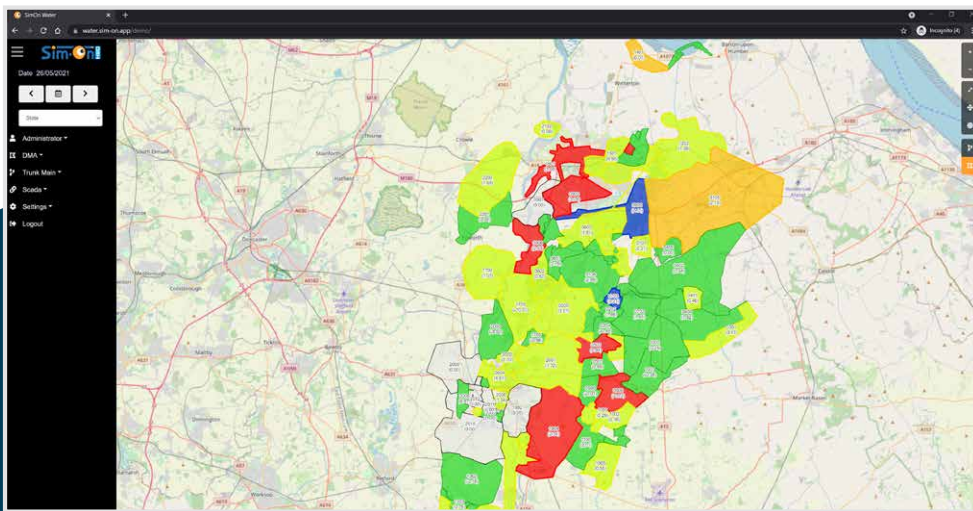


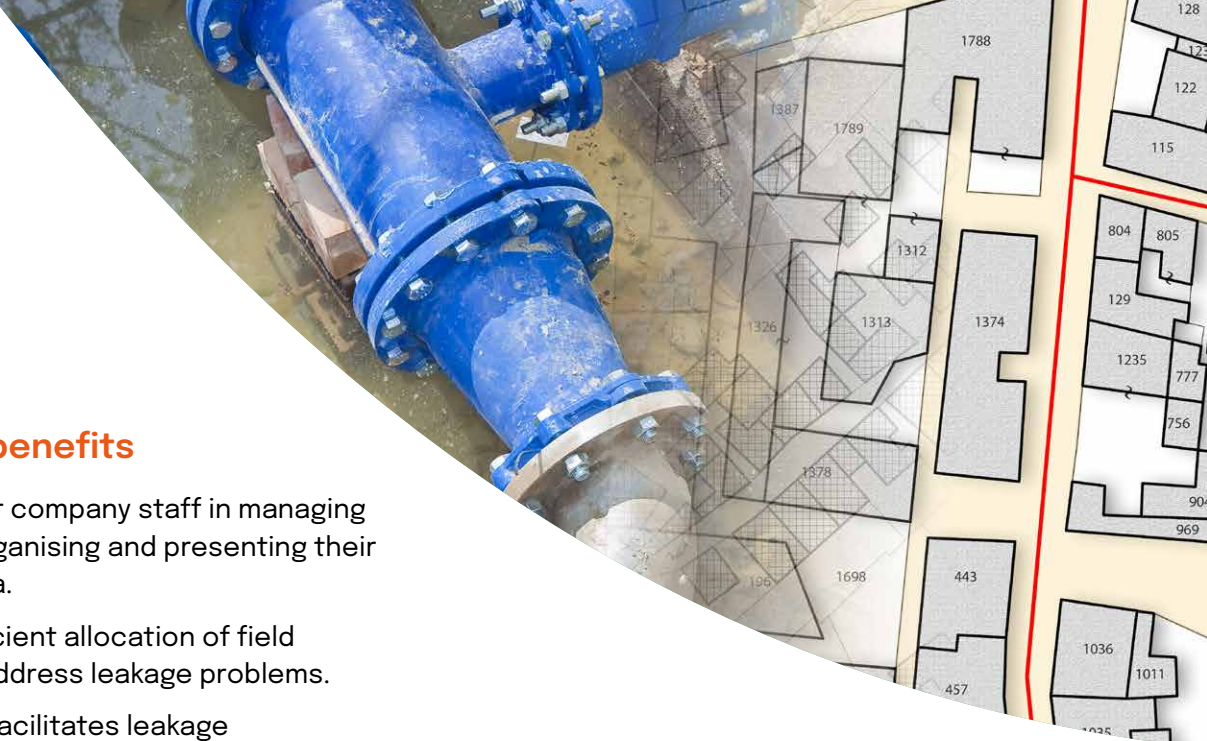
Sim-On Water is a real-time web application dedicated to leak detection that combines multiple data sources in a single environment. It automatically generates leakage reports and issues alerts on potential new leaks, so that they can be found and repaired rapidly, saving water.

Sim-On Water is designed to reduce time, effort and uncertainty in identifying leaks. Separate algorithms have been developed with a focus on both District Metered Areas and Trunk Mains (DMAs and TMs). The measurements coming from smart metering are automatically aggregated and used to estimate leakage within each district.

A leakage targeting dashboard, which is accessed via a web browser on desktops or mobiles, makes it easy for engineers and technicians to see areas where leakage is high, providing valuable information for daily reporting and deploying field resources. It improves teams' response time to finding and therefore repairing leaks, lowering leakage levels, and saving time and money for water companies.

simondigitaltwin.com/sim-on-water





Operational benefits

- Supports water company staff in managing processing, organising and presenting their water flow data.
- Helps with efficient allocation of field operators to address leakage problems.
- Control panel facilitates leakage identification, and provides performance indicators for each managed area.
- Results in a better understanding of problem areas, supporting prioritised works to achieve greatest savings reducing the amount of water lost.
- Easy generation of reports on the performance history of each DMA or TM area, with supportive statistical analysis that can inform the operators of the current state of each area.
- Analysis of volumes and dynamic thresholds for the reduction of false alarms.
- Calculation of additional performance indicators is carried out, such as the dynamic (i.e. daily varying) Infrastructure Leakage Index (ILI), leakage per unit length, and leakage per connection.

Strategic analyses

- Leakage level assessment for each DMA or TM is derived from measured flows and legitimate night usage.
- Statistical analysis of leakage trends is carried out in each area.
- Long- and short-term analysis of the trends of estimated losses, with statistical processing for the determination of alerts.

Usability

- Sim On Water is installed on a Windows server, and users can access the system via a web browser. It is not necessary to install or manage client applications.
- Sim On Water is designed to be supremely easy to use with only a handful of menus. There is no need for advanced training nor for high levels of IT skill to deploy it.
- Our staff can offer training and support in installation and configuration of this application.



Howbery Park
Wallingford
Oxfordshire OX10 8BA
United Kingdom

+44 (0)1491 835381
info@hrwallingford.com
www.hrwallingford.com